

The background features a light blue base with large, soft-edged abstract shapes in sage green and peach. Thin, flowing orange lines meander across the page. Scattered throughout are small, solid-colored circles in orange, sage green, and black. In the bottom right, there are stylized brushstrokes in sage green and orange.

Special Education Advisory Council (SEAC)

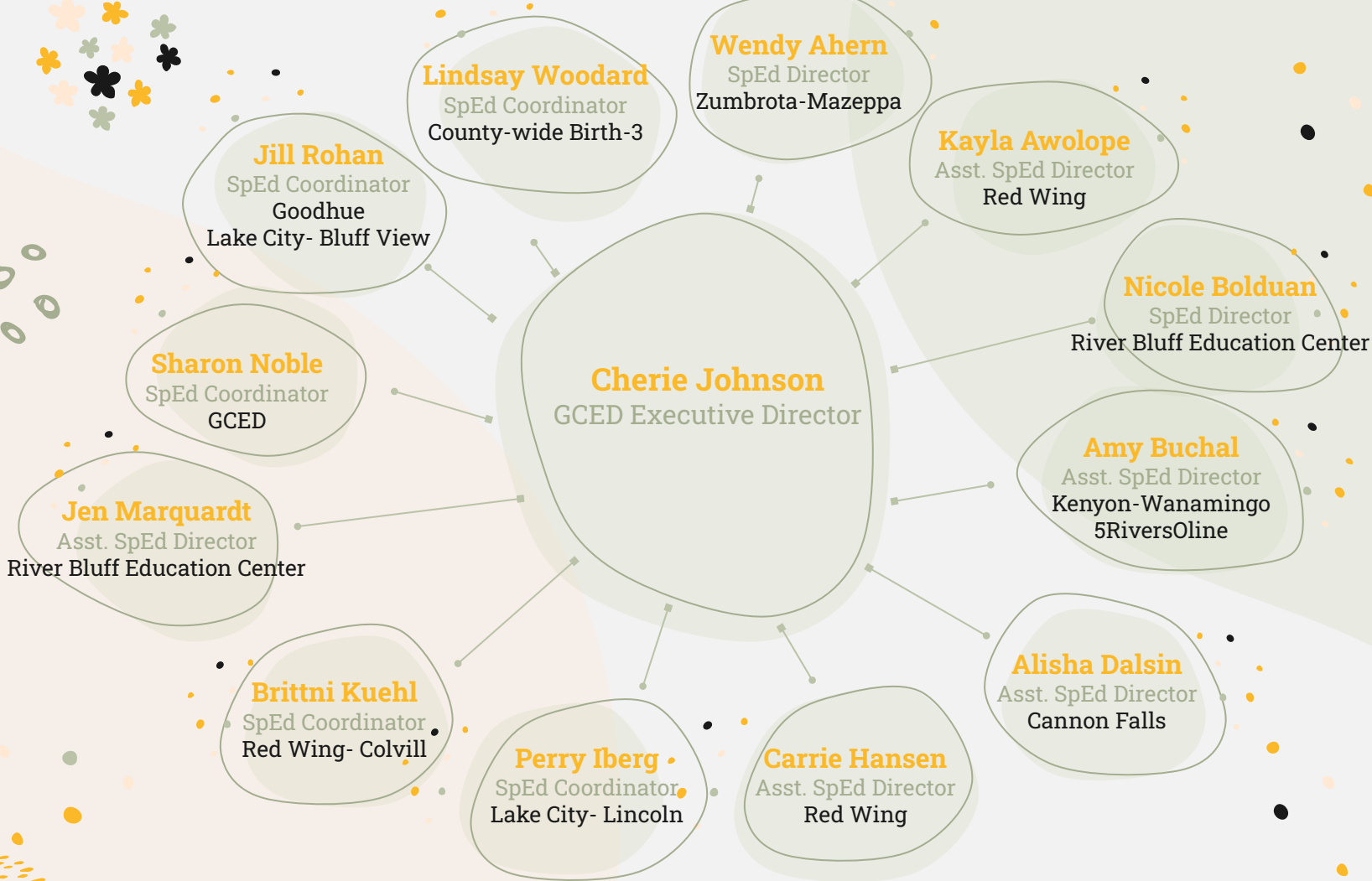
Goodhue County Education District



GOODHUE COUNTY EDUCATION DISTRICT

PARTNERS IN THE JOURNEY

Goodhue County Education District (GCED) supports 6 member districts with the primary focus of building capacity and supporting staff members countywide to ensure effective and culturally responsive instruction.



Get to Know SEAC

[SEAC Informational Flyer \(English\)](#)

[SEAC Informational Flyer \(Spanish\)](#)



Welcome!

Morgan Price is with us tonight to share resources and information for mental health services through Goodhue County Health and Human Services.



Family Support Grant

MnCHOICES Assessment

Mental Health Providers

Medical Assistance

- Medical Assistance (MA) is Minnesota's Medicaid program for individuals with low income
- Minnesota resident
- U.S. citizen or a qualifying noncitizen
- Provide a Social Security unless an exception is met
- Meet the income limit and asset limit, if any
- The income limit and calculations depend on your age and who lives with you. If you are pregnant, blind or have a disability, you also may have a different income limit
- Meet any other program rules

TEFRA

- Tax Equity and Fiscal Responsibility Act
- Medical Assistance (MA) under the TEFRA option allows MA eligibility for children with disabilities in families with incomes too high to qualify for MA
- Good news!!
- As of July 1, 2023, parents with children on the waiver no longer need to pay TEFRA payments. They will have to pay them when they first go on MA until MA-LTC and waiver kicks in but then it will go away

Definition of Disability- Child

A medically determinable physical or mental impairment, or combination of impairments, that has lasted or is expected to last for a continuous period of not less than 12 months or result in death causes marked and severe functional limitations.



Acceptable Medical Sources

- Licensed physicians and licensed physician assistants (within licensed scope of practice)
- Licensed Advanced Practice Registered Nurses (APRN) (within their licensed scope of practice)
- Qualified speech-language pathologists (SLPs) for speech/language impairments
 - For a full list, see https://www.ssa.gov/OP_Home/cfr20/416/416-0902.htm
- Licensed psychologists (at independent practice level)
- School psychologist for intellectual/learning disabilities
- LPCCs and LICSWs are NOT considered acceptable medical sources

Who is SMRT?

- State Medical Review Team
- Group of professionals with specialized training and backgrounds who follow the Social Security Administration's criteria to determine disability for:
- People who apply for Medical Assistance (MA) and related programs– or –
- People who need disability related services in other DHS programs.

SMRT Process

- SMRT receives a referral from a county financial worker
- SMRT immediately, upon referral, mails a disability worksheet to the client (to collect demographic info, medical info and activities of daily living)
- SMRT calls the client and conducts an informal interview
- SMRT gathers medical records & follows the 5-step sequential evaluation process (like SSA)
- SMRT makes a determination of approved or denied

Age 18 Disability Redetermination

- If an individual is found to be disabled as a child, SMRT must complete a new assessment when they turn 18 for continued disability status
- Disability criteria changes once an individual turns 18

What Good Does a Disability Certification Do?

- SSI provides monthly benefits
- Having a child is expensive, having a disabled child even more so
- Help with transportation, housing, food, etc.
- Makes up for parental income lost
- Disability certification can open doors
- Medical Assistance
- Community supports
- Vocational development
- Establishing certain trusts for long-term planning and MA eligibility



Programs

- Family Support Grant (FSG)
- CFSS
- Home and Community Based Services
- Brain Injury Waiver (BI)
- Community Alternative Care Waiver (CAC)
- Community Access for Disability Inclusion Waiver (CADI)
- Developmental Disabilities Waiver (DD)

Family Support Grant (FSG)

- FSG provides cash grants to eligible families up to \$3,113.99 per calendar year to offset higher than average expenses incurred related to a child's disability:
- The FSG program:
 - Helps families access disability services and supports
 - Prevents out of home placement of children who have disabilities
 - Promotes family health and social wellbeing
 - Supports families in transition-related activities for dependents age 14-24
- FSG is available to children:
 - Younger than 25 years of age
 - Live with biological or adoptive family home
 - Family has an annual gross income under \$116,327 (2023) except in cases of extreme hardship
 - Certified disabled
 - MA not needed

Community First Services and Supports (CFSS)

- A Minnesota health care program that offers flexible options to meet unique needs of people
- Allows people greater independence in their home and communities
- Will replace personal care assistance (PCA) and the Consumer Support Grant (CSG)
- CFSS will cover the same main services as PCA
- Two service delivery models
- Agency provider model and budget model
- Person's spouse or parent of a minor may serve as support worker

Waiver Services

- Waiver services are part of a continuum of supports for children and adults who need an alternative to an institutional setting
- There are different types of waivers based on needs/eligibility
- Waivers are for those with the highest care needs in which other programs (PCA, CSG, FSG) are not sufficient to meet their needs
- There are four types of waivers – CADI, BI, CAC, and DD

How do I get started?

What will the MnCHOICES certified assessor ask me?

- Where and how you want to live, work and participate in your community.
- How you like to spend your time and with whom.
- How you take care of your day-to-day personal needs.
- How you manage your home and your physical and emotional health.
- If you have any concerns or other challenges that affect your ability to live as you choose.

Talk

How will a MnCHOICES assessment help?

It may help you:

- Understand your strengths and needs.
- Identify the services and supports that can help you live where you want.
- Identify if you may be eligible for Medical Assistance.
- Access publicly funded programs such as MA waivers, Personal Care Assistance (PCA) or other services and supports.
- It helps you learn about and have help accessing other support options.

Help

What happens after the assessment?

After the interview, the assessor will summarize what they learned about you and your needs, discuss eligibility and outline services and supports that may help.

You will receive:

- A copy of a planning worksheet at the assessment that outlines the services and supports you may be eligible for.
- A written plan that summarizes your care needs and options for services and supports.

Know

What are my rights?

- You have the right to privacy.
- You have the right to be free from discrimination.
- You have the right to appeal if you disagree with the results of the assessment.
- You have the right to an interpreter at no cost to you.

Rights



Parent Support Outreach Program (PSOP)

- Voluntary, early intervention program that focuses on a family's strengths and needs and aims to help children and parents thrive
- Families can refer themselves or be referred by community or social service agencies
- PSOP workers conduct comprehensive assessments of families' needs and strengths and, together, make decisions about what services or community resources are the best choices for success. Short-term help may be available to families with concerns regarding:
 - Basic needs (food, clothing and housing)
 - Family health (medical care, mental and chemical health services)
 - Parenting
 - Transportation
 - Childcare
 - Financial needs (budgeting and financial assistance)

PSOP Continued

- Eligibility:
- Have at least one child, age 10 or younger, or be pregnant.
- Be exposed to two or more child maltreatment risk factors, including but not limited to:
 - Poverty
 - Domestic violence
 - Alcohol and drug problems
 - Mental health concerns
 - History of child protection involvement
 - Homelessness
 - Not currently be involved with child protection services

Making a referral

- Call GCHHS **651-385-3200** and ask for public health intake or the county in which you reside
- Questions? Call us anytime 8am-3:30pm or stop in!

Autism Resources

- Autism Navigation Tool

https://pathlore.dhs.mn.gov/Courseware/DisabilityServices/EIDBI/Autism_Services_Nav_Tool/index.html

- Minnesota Disability Law Center <https://mylegalaid.org/our-work/disability-law>

- MNHelp.info <https://www.minnesotahelp.info>

- ARC of Minnesota <https://arcminnesota.org/regions/southeast/>

- PACER Center <https://www.pacer.org/>

- Disability Hub MN <https://www.disabilityhubmn.org/>

- Help Me Grow <https://helpmegrowmn.org/HMG/index.htm>

- MN Autism Center <https://www.mnautism.org/>

- River City Therapy Center <https://www.rivercitytherapycenter.org/>



Thank you!

Please join us for the next
virtual SEAC meeting on May 8
from 5:00p-6:00p!